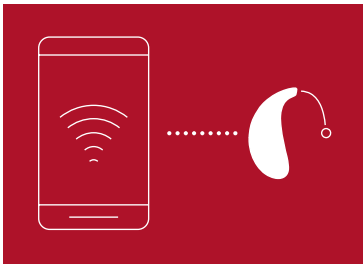


For clients who stream with an Android™ smartphone

ReSound wireless hearing aids enable direct streaming of audio from Android smartphones and tablets – the result of a unique collaboration with Google. ReSound was the first to offer this capability with direct streaming from Android devices to ReSound LiNX Quattro™ and now ReSound ENZO Q™ hearing aids. Check if your client's Android device is compatible and how to get started streaming.

For information on which Android devices are compatible, visit: resound.com/compatibility



Our app can help you check Android streaming compatibility

1. Go to Google Play. In the Search field on top, enter “ReSound Smart 3D” and download the ReSound Smart 3D™ app.
2. Once downloaded, open the app and tap Get Started.
3. Follow the instructions on the screen to connect. You are now ready to go.

Compatibility scenarios

1 GOOD TO GO!

- Smartphone is compatible
- Hearing aids are paired in Bluetooth® settings as Hearing Aid Devices

No red badges will be visible on:

- My ReSound menu
- Direct Audio Streaming menu point

2 MUST PAIR CORRECTLY

- Smartphone is compatible.
- Hearing aids are not paired in Bluetooth settings as Hearing Aid Devices

Red badges will be visible on:

- Status and My ReSound menus.
- Direct Audio Streaming menu point.

Tap the menu point for guidance to pair correctly.

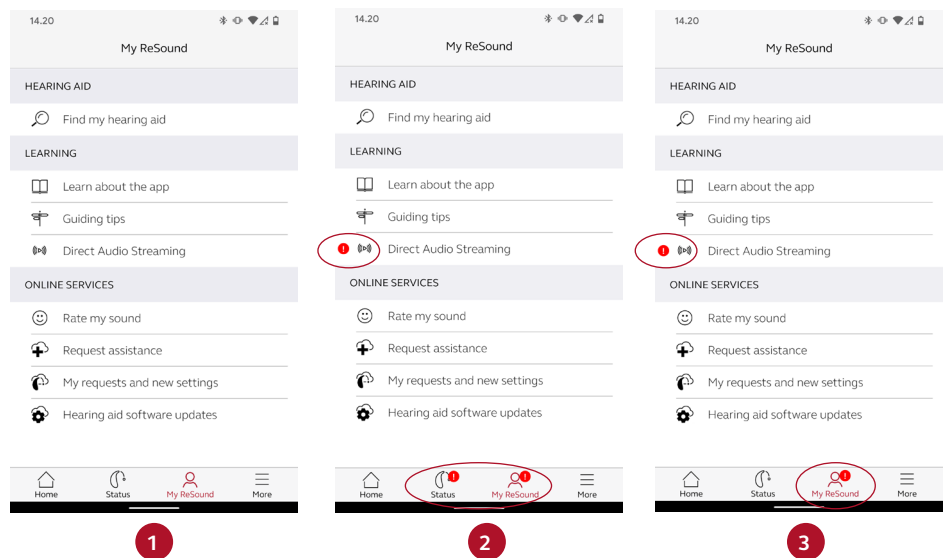
3 NOT COMPATIBLE

- Smartphone is not compatible.

Red badges will be visible on:

- My ReSound menu
- Direct Audio Streaming menu point

Tap the menu point for information about compatibility requirements.



NOTE: The direct audio streaming requires minimum Android 10 and Bluetooth 5.0, and that Android Streaming to Hearing Aids has been enabled by the phone manufacturer. If direct Android streaming is not supported by your hearing aids or Android smartphone, you can use the ReSound PhoneClip+ to stream sound. The ReSound PhoneClip+ enables you to connect your ReSound hearing aids to any Bluetooth v.2.0 Android device.